

This document incorporates data which is:
 © Commonwealth of Australia (Geoscience Australia) 2002
 The Data has been used in this document with the permission of Geoscience Australia. Geoscience Australia has not evaluated the Data as incorporated within this document, and therefore gives no warranty regarding its accuracy, completeness, currency or suitability for any particular purpose.
 Sinclair Knight Merz Pty. Ltd. does not warrant that this document is definitive nor free of error and does not accept liability for any loss caused or arising from reliance upon information provided herein.



Refer to Sinclair Knight Merz document
 (\\wms\wcb2188\gisarcview\sw2032.apr)
 SWL 2032 - spray conversion 2014 (Layout) A3

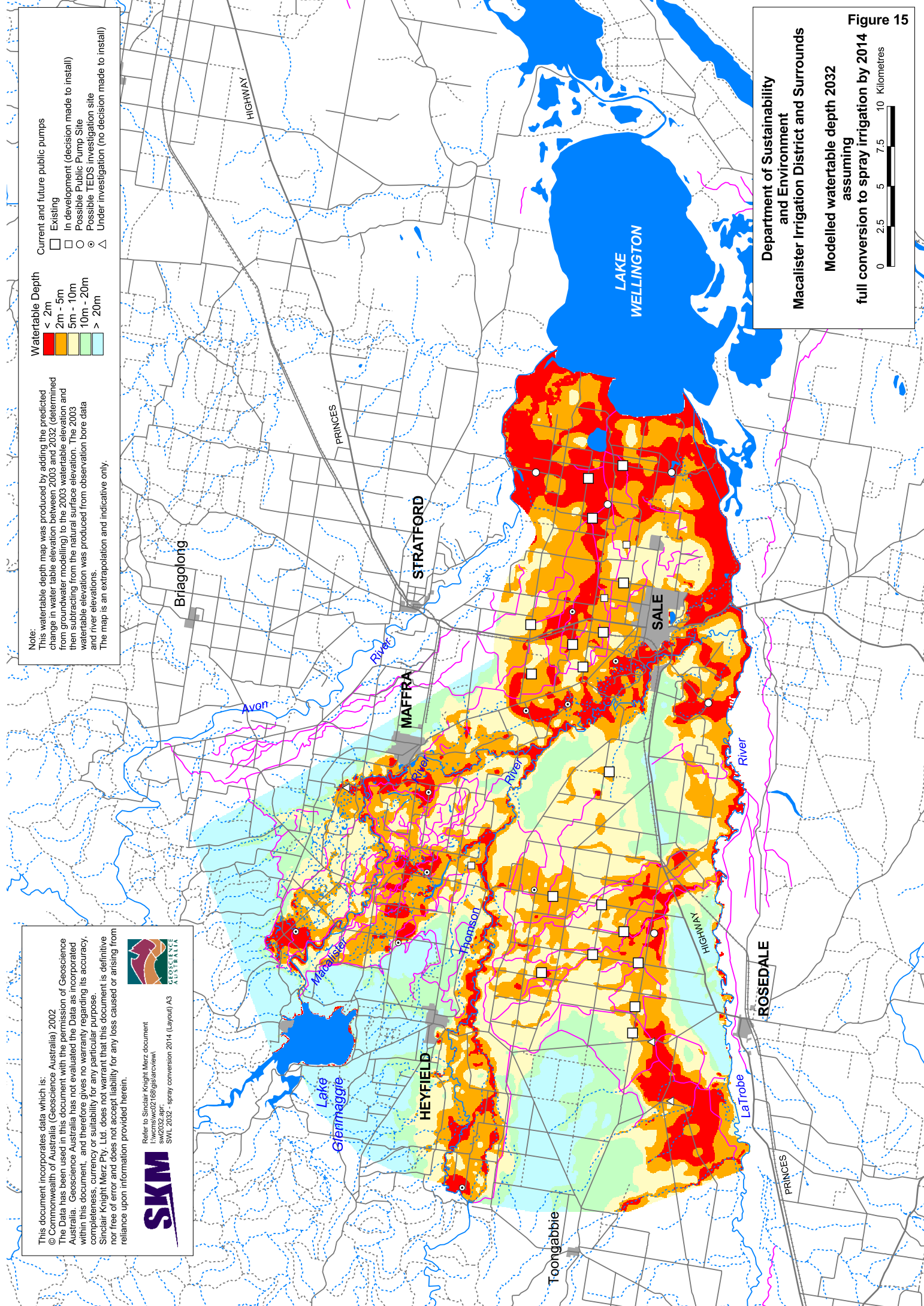
Note: This waterable depth map was produced by adding the predicted change in water table elevation between 2003 and 2032 (determined from groundwater modelling) to the 2003 waterable elevation and then subtracting from the natural surface elevation. The 2003 waterable elevation was produced from observation bore data and river elevations.
 The map is an extrapolation and indicative only.

Waterable Depth

Red	< 2m
Orange	2m - 5m
Yellow	5m - 10m
Light Green	10m - 20m
Dark Green	> 20m

Current and future public pumps

□	Existing
□	In development (decision made to install)
○	Possible Public Pump Site
○	Possible TEDS investigation site
△	Under investigation (no decision made to install)



Department of Sustainability and Environment
 Macalister Irrigation District and Surrounds

Modelled waterable depth 2032 assuming full conversion to spray irrigation by 2014

Figure 15